



NEW

2668 - V-SHAPED NECKLINE TOP

XS-3XL • White (WHDG)

Cotton/Poly Dobby Gingham Plaid

This v-shaped neckline has an interesting bar-tack and pleating detail at the shoulders. The front panel creates a comfortable flowing silhouette. The back features slanted yokes and a pin-tuck detail at center back. Angled pockets and side vents complete the picture. Center back length 26".

NEW

2692 - ROUND NECK TOP

XS-3XL • White (WHTS)

Brushed Cotton/Poly Poplin

This round neck top features beautiful embroidery on the center front. The side smocked elastic waist and bust darts create a flattering shape. Two patch pockets and side vents. Center back length 26½".

NEW

2693 - ROUND NECK TOP

XS-3XL • White (WHTS)

Cotton/Poly Poplin

This fashion white top has a round neck with unique crystal clear buttons on a functional placket. Also featured is a box pleat trim and release darts at the front. The back is shaped with a yoke and waist darts. The front patch pockets have a delicate pleat detail and the right side has a pencil stitch. Side vents. Center back length 26".

Whether they are required or if you need a garment that just looks professional and goes with everything, we offer a collection of whites that feature “Can’t See Thru Me” Poly/Cotton Twill. So even our most delicate looking designs are durable, easy-care and professional.



1369 - 32" SNAP FRONT LAB COAT
 XS-3XL • White (WHT)
Poly/Cotton Twill with soil release
 Two patch pockets, a cell phone pocket, a chest pocket. Snap back belt detail, side vents. Princess seaming, front darts and a back yoke for easy shaping. Center back length 32".



1403 - EMBROIDERED CARDIGAN LAB COAT
 XS-3XL • White (WHTS)
Brushed Cotton/Poly Poplin
 A shaped v-neck cardigan lab coat features pretty floral embroidery on the neckline edge. Additional details include front and back princess seaming, front patch pockets, and center back smocked elastic with side button waist tabs for flattering fit. Center back length 29".



1481 - EMBROIDERED LAB COAT
 XS-2XL • White (WHTS)
Brushed Cotton/Poly Poplin
 A curved notch lapel lab coat features tone on tone leaf embroidery on the right front collar and on top of two patch pockets. Princess seaming and an adjustable back ties for a slimming, professional look. Center back length 29".



1491 - THREE QUARTER SLEEVE JACKET
 XS-2XL • White (WHTD)
Cotton/Poly Poplin
 This three quarter sleeve jacket has front and back princess seams with back belt detail. Tonal embroidered flowers, vines and leaves accent the front neckline. Two deep patch pockets finish the picture. Center back length 28½".



2300 - CLASSIC LAB COAT
 XS-3XL • White (WHT)
Poly/Cotton Poplin with soil release
 This classic lab coat features a notch lapel and collar, princess seaming, two angled patch pockets, center back belt and side vents. Center back length 32".



2316 - 30" LAB COAT
 XS-3XL • White (WHTC)
Poly/Cotton Twill with soil release
 A twill lab coat features a five button front, front princess seams for a flattering fit, front angled pockets, a stylish back belt with buttons detail, back yoke and center back vent. Center back length 30".



2317 - BLAZER STYLE LAB COAT
 XS-3XL • White (WHTC)
Poly/Cotton Twill with soil release
 A fitted blazer-style lab coat features two front patch pockets with additional side entry pockets, a three button front, slimming front and back princess seams and a sewn in back belt with four release pleats for ease of movement. Center back length 28".



2321 - NOTCHED LAPEL LAB COAT
 XS-2XL • White (WHTD)
Cotton/Poly Poplin
 Notched lapel lab coat has front and back princess seams. Two front faux flap pockets with pin tucks and a center back belt. Center back length 30".



2323 - 30" LAB COAT
 XS-3XL • White (WHTS)
Brushed Cotton/Poly Poplin
 Blazer style, notched lapel lab coat features beautiful intricate appliqué rondelles lace on front patch pockets, with front and back princess seaming. Center back length 30".



2332 - V-NECK CARDIGAN
 XS-3XL • White (WHTS)
Brushed Cotton/Poly Poplin
 A shaped v-neck cardigan has feminine lace running down the front neckline and on the back belt. Princess seaming at back, side vents and two front patch pockets. Center back length 29½".



2350 - EMBROIDERED LAB COAT
 XS-2XL • White (WHTS)
Brushed Cotton/Poly Poplin
 Notched lapel lab coat features embroidery on the collar and two pocket bands. Princess seaming in front and back for added shape and a center back belt. Center back length 30".



2351 - LADY LUXE LAB COAT
 XS-2XL • White (WHTD)
Cotton/Poly Poplin
 Lab coat with notched lapel, front and back princess seams. Jacquard ribbon trims the pockets and a center back belt. Center back length 33".



2362 - EMBROIDERED LAB COAT
 XS-2XL • White (WHTD)
Cotton/Poly Poplin
 Allover floral embroidery enhances the front of this princess seamed lab coat. Two roomy inseam pockets, back princess seams and a back belt complete this style. Center back length 29".



2371 - EMBROIDERED LAB COAT
 XS-3XL • White (WHTS)
Brushed Cotton/Poly Poplin
 A long sleeve, three button, notched lapel lab coat features beautiful vintage style embroidery on the front patch pockets. Front princess seaming, a back belt and back princess seaming complete the picture. Center back length 29".



2390 - DAISY EMBROIDERY LAB COAT
 XS-3XL • White (WHTS)
Brushed Cotton/Poly Poplin
 A notched lapel lab coat features front and back princess seams for flattering fit and front patch pockets. Pretty daisy embroidery on the pocket band and back belt complete this feminine look. Center back length 29½".



2410 - 36" NOTCH COLLAR LAB COAT

XS-3XL • White (WHT)
Poly/Cotton Twill with soil release
 A stylish and figure flattering lab coat features a notch collar, front and back princess seams, angled front patch pockets, back belt with button detail, and mock sleeve cuff. Center back length 36".



1302 - 30" WARM-UP/ LAB COAT

XS-3XL • White (WHT)
Cotton/Poly Poplin
 Rib knit cuffs, two buttoned patch pockets and a utility pocket. Seams shape front, an elastic inset with buttoned tabs shapes the back. Center back length 30".



1402 - EMBROIDERED WARM-UP

XS-3XL • White (WHT)
Cotton/Poly Poplin
 Tone on tone embroidery runs along the neckline. Darts and an adjustable back tie for shape, two patch pockets, button front and rib knit cuffs. Center back length 30½".



1949 - EYELET JACKET

XS-3XL • White (WHT)
Cotton/Poly Poplin
 Three-quarter sleeve button front jacket with cutout eyelet embroidery on sleeve bands and pockets. Princess seaming, back tie, patch pockets and side vents. Center back length 29½".



1933 - PRINCESS SEAM TUNIC

XS-3XL • White (WHT)
Cotton/Poly Poplin
 V-neck with front and back yoke with princess seams for shape and a center back elasticized waist. Two patch pockets and side vents. Center back length 28".



1981 - EMBROIDERED TOP

XS-2XL • White (WHTS)
Brushed Cotton/Poly Poplin
 Subtle leaf embroidery and piping accents the deep v-neckline of a short sleeve top with front inset, two side angled pockets and a piped empire waist that ties at the back for an ultra feminine look. Top features self-piping and tone on tone embroidery. Center back length 26".



1991 - OBI CROSSOVER TOP

XS-2XL • White (WHTD)
Cotton/Poly Poplin
 This Asian influenced top has an empire Obi waistband and back ties. Tonal embroidered flowers, vine and leaves accent the wrap neckline and obi waist. Soft shirring at the bust and two angled pockets complete this beautiful look. Center back length 26".



2680 - WESKIT TOP

XS-2XL • White (WHTC)
Poly/Cotton Poplin with soil release
 The weskit buttons down the front and is shaped in the center back with shirred elastic. Two patch pockets as well as a cell phone pocket. Center back length 24½".



2733 - BUTTON FRONT V-NECK TOP
 XS-3XL • White (WHFT)
100% Cotton French Twill
 French twill novelty v-neck, with delicate lace edged button front placket, empire waist with all-around elastic, two front patch pockets, and side vents. Center back length 27".



2741 - V-NECK EMBROIDERED TOP
 XS-3XL • White (WHTS)
Brushed Cotton/Poly Poplin
 A v-neck top features beautiful vintage style cut-out embroidery around front neckline. Also featured are front princess seams, front patch pockets, side vents, and half back elastic for flattering shape. Center back length 26".



2751 - SQUARE NECK TOP
 XS-3XL • White (WHTS)
Brushed Cotton/Poly Poplin
 A square neck trimmed in soutache gives this top a unique designer touch. Soft front shirring, angled patch pockets, half back elastic and side vents complete this look. Center back length 26½".



2763 - ROUND NECK TOP
 XS-3XL • White (WHCG)
100% Cotton Clip Geo
 A round neck top features a three button faux front placket between four rows of pin tucks, two rows of delicate lace trim at the shoulder, front bust darts for flattering fit, two front patch pockets, half back elastic and side vents. Center back length 26".



2791 - 3/4 SLEEVE LACE NECK TUNIC
 XS-3XL • White (WHTS)
Brushed Cotton/Poly Poplin
 Three-quarter sleeve tunic features novelty keyhole neckline embellished by beautiful venice lace applique, front bust darts, front patch pockets, side vents, half back elastic for flattering shape. Center back length 27".



2893 - EMBROIDERED ROUND NECK TOP
 XS-3XL • White (WHTS)
Brushed Cotton/Poly Poplin
 Round neck top with front button placket, features floral embroidery around neckline, front placket and armholes, patch pockets, side vents and center elastic for figure flattering fit. Center back length 27".



2900 - EMBROIDERED MOCK WRAP TUNIC
 XS-3XL • White (WHTC)
Poly/Cotton Poplin with soil release
 White on white embroidery adorns the neckline. Two patch pockets, side vents and adjustable back tie. Center back length 27½".



2901 - SPLIT NECK TUNIC

XS-3XL • White (WHT)

Cotton/Poly Poplin

Tone-on-tone embroidery featuring scalloping around the edge of the neckline. Two patch pockets, side vents and an adjustable tie back. Center back length 28".



2910 - EYELET VINEYARD TUNIC

XS-3XL • White (WHTS)

Brushed Cotton/Poly Poplin

Beautiful eyelet vineyard embroidery borders the sleeves and the notched neckline of this tunic. Two patch pockets, side vents and adjustable back drawstring. Center back length 27".



2913 - EMBROIDERY TOP

XS-2XL • White (WHTS)

Brushed Cotton/Poly Poplin

The front hemline is embroidered with a border of beautiful scalloped Art Deco flowers. Deep v-neckline with dickie inset, empire waist, soft shirring and two side angled pockets complete this style. Center back length 27½".

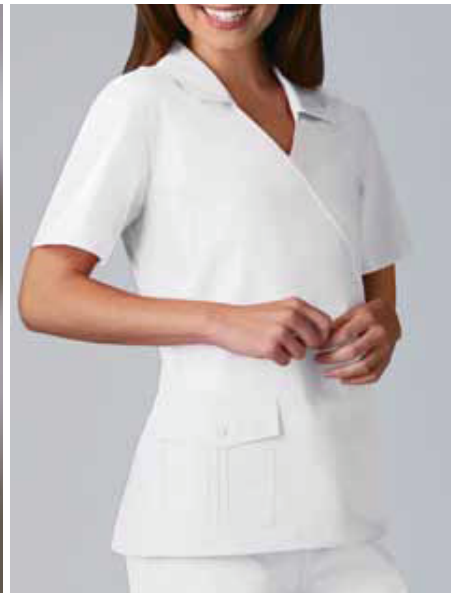


2960 - EMBROIDERED TOP

XS-2XL • White (WHT)

Cotton/Poly Poplin

All-over embroidery is featured on the front of a top with empire waistband and back ties, giving this top a two in one effect. A front inset, soft shirring and two side angled pockets complete this style. Center back length 26½".



2962 - MOCK WRAP TOP

XS-2XL • White (WHTS)

Brushed Cotton/Poly Poplin

Short sleeve mock wrap, Johnny collar top. Two side seam pockets and one front faux flap pocket with pin tucks. Side vents. Center back length 26".



2990 - DAISY EMBROIDERY SCOOP NECK TOP

XS-2XL • White (WHTS)

Brushed Cotton/Poly Poplin

An attractive scoop neck top with empire waist with soft shirring, two side angled pockets and set-in waistband wraps around and ties in the back for adjustability. A pretty daisy appliqué is featured on the waistband and a "field of daisies" embroidery borders the front hem. Center back length 26".



2930 - MOCK CROSS OVER TOP
 XS-3XL • White (WHTS)
Brushed Cotton/Poly Poplin
 Feminine lace is placed all over the front bodice of an empire waist top. Rounded inseam pockets, side vents and adjustable back ties complete the picture. Center back length 26½”.



2942 - EMBROIDERED SLIM FIT TOP
 XS-3XL • White (WHTS)
Brushed Cotton/Poly Poplin
 A slim fit, shaped top sports puff floral embroidery, sweetheart neckline, short sleeves and two patch pockets. Center back length 25”.



2951 - EMBROIDERED MOCK WRAP TUNIC
 XS-2XL • White (WHTS)
Brushed Cotton/Poly Poplin
 Mock wrap tunic features embroidery on the bands of the two patch pockets. Side vents and adjustable back tie. Center back length 27”.



1602 - BUTTON DOWN VEST
 XS-3XL • White (WHT)
Cotton/Poly Poplin
 A sporty vest with button front styling and two roomy patch pockets. Soft elastic shirring in center back. Center back length 29”.



2610 - LACE TRIMMED VEST
 XS-3XL • White (WHTD)
Cotton/Poly Poplin
 Feminine lace edges the v-neckline, the top edge of the patch pockets and the center back belt of a button front vest. Princess seaming gives soft shaping to the back. Center back length 28”.



160 - RIB KNIT CUFF PANT
 XS-5XL • White (WHT)
Cotton/Poly Poplin
 Elastic waist pant with matching rib knit cuffs, fancy waist label and two side pockets. Inseam 28½”.

NEW

2411 - 37" WOMEN'S LAB COAT R

XS-3XL • White (WHTD)

Cotton/Poly Poplin

This professional lab coat features a classic notched lapel collar with three outside patch pockets and one inside pocket. Front and back princess seams create a flattering and slimming look. Center back length 37".

(Shown right)

2319 - 36" LAB COAT R

XS-3XL • White (WHTC)

Poly/Cotton Twill with soil release

A fit and flare, 36" lab coat features a notch collar, front yokes, front and back princess seams, two roomy double patch pockets with stitched down instrument holders, center back vent and adjustable back button tabs. Center back length 36". *(Shown below)*



Features "Can't See Thru Me" Fabric



2319

R Reorderable Style



2411

75