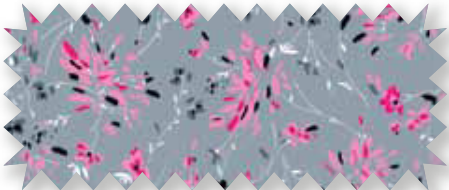


Touch So Soft. So Beautiful.



Feeling Grey-T (FGRY)
100% Cotton Swiss Dot



2731*
XS-3XL



BLKW
Contrast
2745
XS-3XL

Black Grey Pewter Shocking Pink White

(*Shown with 1069 Shocking Pink pant)

Luxe Leaves (LUXL)
100% Cotton

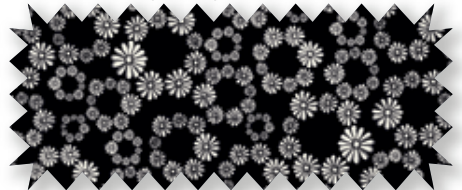


SHPW
Binding
2965C*
XS-3XL

Black Grey Pewter Shocking Pink White

(*Not shown)

Circle of Daisies (CRCD)
100% Cotton Stripe Dobby



BLKW
Contrast
2673
XS-3XL

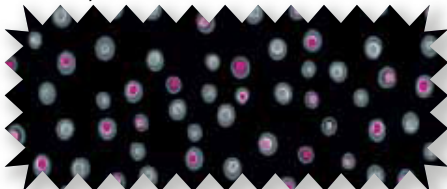


2753*
XS-3XL

Black White

(*Shown with 1069 Black pant)

Double Bubble (DBLO)
100% Rayon



AZPR
Contrast
2617
XS-3XL

Azalea Black White

Out of the Box (OTBX)
Cotton/Spandex



ROYW
Binding
2774
XS-3XL

Chocolate Peacock Royal Turquoise White



Fantastic Flora (FTST)

100% Cotton



CHCW
Contrast
2730C*
XS-3XL



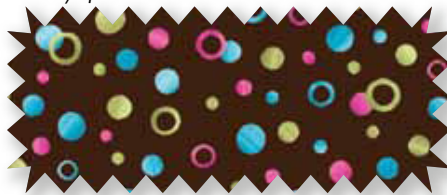
CHCW
Binding
2996C
XS-3XL

Aloe	Azalea	Celadon	Chocolate	Mali-Blu
Shocking Pink	Turquoise	White		

(*Shown with 1119 Chocolate pant)

Spot of Color (SPTC)

Cotton/Spandex



TRQW
Binding
2703*
XS-3XL



CHCW
Contrast
2712
XS-3XL

Celadon	Chocolate	Shocking Pink	Turquoise	White
---------	-----------	---------------	-----------	-------

(*Shown with 1069 Turquoise pant)

Wind Swept (WNDS)

100% Cotton Opaque Swiss Dot



2731*
XS-3XL



SHPW
Contrast
2938
XS-3XL



Black	Dandelion	Grey	Peacock	Shocking Pink
White				

(*Shown with 2079 Black pant)



**2627
MOCK WRAP TOP**

XS-3XL • Poly/Rayon Twill
Mock wrap top features contrast neck binding and contrast waist with adjustable drawstring. Additional features are back elastic, side vents and two patch pockets that are bar-tacked to hold pen, pencil or instrument in place. Center back length, 27½".

-  AZPR - Azalea w/ Black Contrast
-  MBPR - Maize w/ Black Contrast



**2949
CONTRAST TIE TOP**






XS-3XL • Poly/Rayon Twill
A great fashion must-have top is enhanced by a soft, supple and drapable fabrication. It features two side angled pockets, contrast at the hem, and contrast ties that tie to the back. Center back length 26".



**2799
EMPIRE TOP**




XS-3XL • Poly/Rayon Twill
A contemporary empire waist top features contrast trim on the deep V-neck band. An inset dickey and elasticized smocking at center front, 2 patch pockets and back elastic for a flattering fit complete the picture. Center back length 27".

2949 and 2799 comes in these 9 colors.
Contrast colors in parentheses.

-  AZPR - Azalea (Black)
-  BKPR - Black (Azalea)*
-  CHPR - Chocolate (Turquoise)
-  CLPR - Ciel (Navy)
-  MZPR - Maize (Chocolate)
-  NVPR - Navy (Azalea)**
-  RYPR - Royal (Black)
-  SPPR - Shocking Pink (Black)
-  WHPR - White (White)

*Not available in 2799
**Not available in 2949

2979 & 2999 comes in these 5 colors.

-  AZPR - Azalea*
-  CHPR - Chocolate
-  MZPR - Maize*
-  SPPR - Shocking Pink
-  TQPR - Turquoise*

*Not available in 2979



**2979
MOCK WRAP TOP**

XS-3XL • Poly/Rayon Twill
A luxurious mock wrap top is enhanced with its soft, supple and drapable fabrication. Featured are two front pockets, side vents and back elastic. Center back length 27".



**2999
V-NECK TOP**

XS-3XL • Poly/Rayon Twill
This top features shaped V-neckline. An angled cell phone pocket and stitched pencil pocket is featured on the front right patch pocket. Side vents and center back elastic for flattering shape complete the picture. Center back length 27".



**1069
FLAT FRONT TROUSER**

XS-3XL • Poly/Rayon Twill
This wide leg pant is the perfect wardrobe addition and is enhanced by its soft, supple and drapable fabrication. A flat front waist with darts, three pockets, back elastic and side vents complete the picture. Inseam 31".

- BKPR - Black
- CHPR - Chocolate
- RYPR - Royal
- SPPR - Shocking Pink
- WHPR - White

**1119/1119P
DRAWSTRING CARGO PANT**

XS-3XL, Petite XS-2XL • Poly/Rayon Twill
This must-have drawstring pant is enhanced by a soft, supple and drapable fabrication. Additionally featured is back elastic, two slash pockets, one side cargo pocket and one back pocket. Inseam 31", Petite 28½".

- AZPR - Azalea
- No Petite* BKPR - Black
- No Petite* CHPR - Chocolate
- No Petite* CLPR - Ciel
- MZPR - Maize
- No Petite* NVPR - Navy
- No Petite* RYPR - Royal
- SPPR - Shocking Pink*
- No Petite* WHPR - White

*Not available in 1119

**2079/2079P/2079T
DRAWSTRING PANT**

XS-3XL, Petite XS-2XL, Tall XS-2XL • Poly/Rayon Twill
An updated flare leg pant features an adjustable self drawstring waist and two scooped rounded pockets. Inseam 31", Petite 28½", Tall 34".

- No Tall* AZPR - Azalea
- No Tall* BKPR - Black
- No Tall* CHPR - Chocolate**
- MZPR - Maize
- No Tall* NVPR - Navy*
- No Tall* RYPR - Royal*
- SPPR - Shocking Pink†

*Not available in Petite

**Not available in 2079

† Not available in 2079/2079P