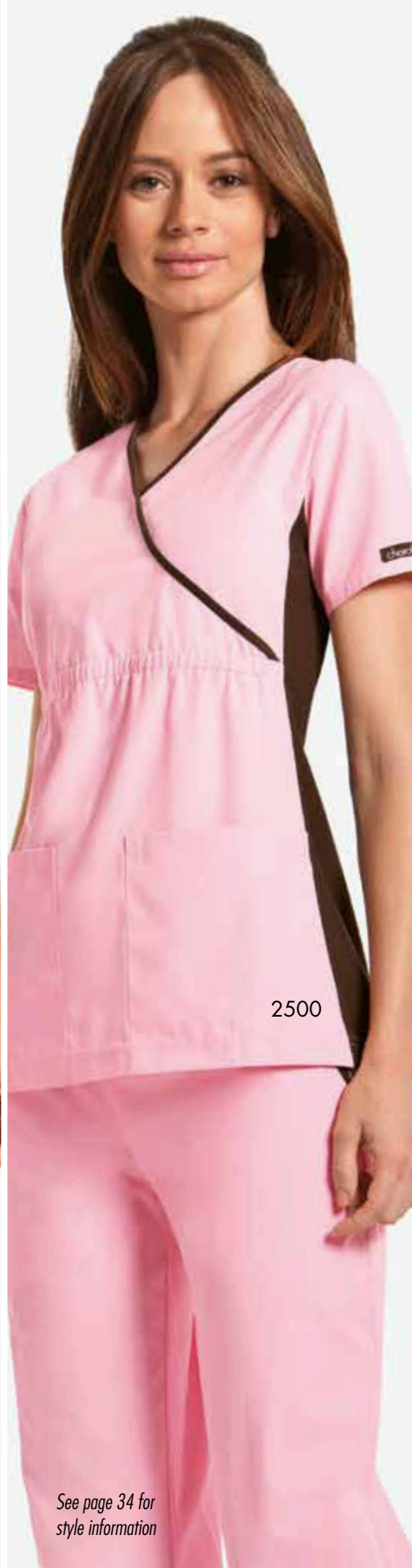




28



*See page 34 for
style information*





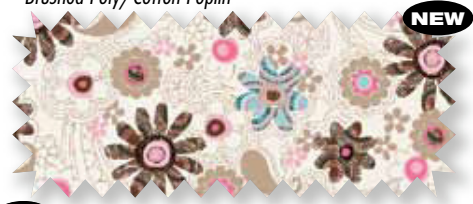
2874

See page 34 for style information



SUGAR LAND

Walking On Sunshine (WAKS) Brushed Poly/Cotton Poplin



2983*†
XS-5XL

Chocolate Khaki Pink Blush White

(*Shown with 1031 Khaki pant)

Stripe Hype (SPHP) 100% Cotton



2875C*†
XS-5XL

Chocolate Pink Blush White

(*Shown with 1031 Chocolate pant)

Sugar Land (SGLD) 100% Cotton



2875C*†
XS-5XL

Chocolate Khaki Pink Blush White

(*Shown with 1031 Pink Blush pant)

†Chocolate (CHKK) Poly/Spandex knit panels, neckbands and Cuffs on the Warm-ups



BRIGHTEN
UP



IT'S ALWAYS
SUNNY



SUNSHINE
BUTTERFLY

Brighten Up (BRTN)
100% Cotton



NEW



2875C*†
XS-5XL



(*Shown with 2074 Chocolate pant)

It's Always Sunny (ITAS)
100% Cotton



NEW



CHCW
Binding
2681C
XS-3XL



2789C*†
XS-5XL



(*Shown with 1031 Orchid pant)

Sunshine Butterfly (SNBT)
100% Cotton



NEW



2875C*†
XS-5XL



White (*Shown with 2074 Chocolate pant)

Alana (ALAN)
100% Cotton



CHCW
Binding
2915C†
XS-3XL



Astor Place (ASTP)
100% Cotton



CHCB
Binding
2915C†
XS-3XL



White

Bellini (BINI)
100% Cotton • Chocolate Cuffs



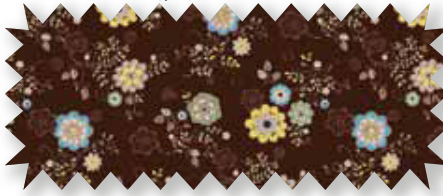
1301C
XS-3XL



2875C†
XS-5XL



Breezing By (BRZN)
100% Cotton • Poly/Spandex Chocolate Knit Cuffs



2315C†
XS-3XL



2875C†
XS-5XL



Burst of Blooms (BSTO)
100% Cotton • Poly/Spandex Chocolate Knit Cuffs



2315C†
XS-5XL



2875C†
XS-5XL



Butterfly Nouveau (BNOU)
100% Cotton



2875C†
XS-5XL



Cracklin' Rosie (CKRO)
100% Cotton



CHCW
Contrast
2743C
XS-3XL



2789C†
XS-5XL



De Soto (DESO)
100% Cotton • Poly/Spandex Chocolate Knit Cuffs



R



2315C†
XS-5XL



2875C†
XS-5XL



Deauville (DEAU)
Brushed Poly/Cotton Poplin



CHCB
Contrast
2865
XS-3XL



2875†
XS-5XL



flexibles *Comfort. Movement. Shape.*

Delilah (DLA)

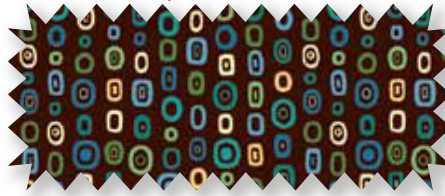
100% Cotton • Poly/Spandex Chocolate Knit Cuffs



Chocolate Khaki Pink Rose Pink Blush White

Dot So Square (DTSO)

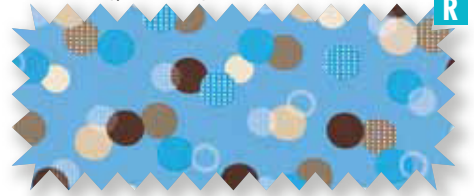
100% Cotton • Poly/Spandex Chocolate Knit Cuffs



Aloe Chocolate Dandelion Peacock White

Dotted Dot Dot (DOTD)

Brushed Poly/Cotton Poplin



Blue Mist Chocolate Khaki White

Eco Floral (ECOF)

Brushed Poly/Cotton Poplin



Chocolate Khaki Pink Blush White

Eye Of The Tiger (EYTI)

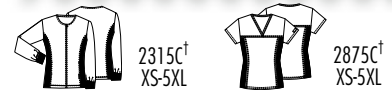
100% Cotton



Chocolate Khaki White

Floral Fun (FRFU)

100% Cotton • Poly/Spandex Chocolate Knit Cuffs



Aloe Chocolate Khaki White

Flying Through Hoops (FLYN)

100% Cotton



Chocolate Khaki Orchid Pink Blush White

Full Bloom (FULB)

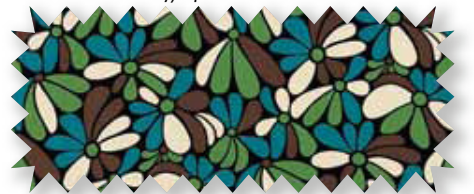
Brushed Poly/Cotton Poplin



Chocolate Khaki Orchid Pink Blush White

Garden Mosaic (GMOS)

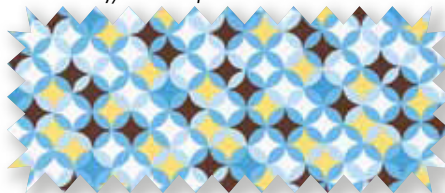
100% Cotton • Poly/Spandex Chocolate Knit Cuffs



Aloe Chocolate Khaki Peacock White

Geo Dots (GEOD)

Brushed Poly/Cotton Poplin



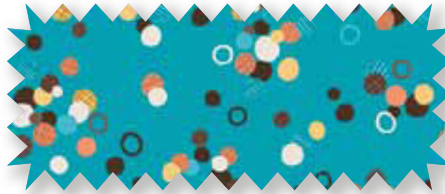
Blue Mist Chocolate White

Growing Up (GROW)
100% Cotton



Chocolate Khaki Pink Blush Shocking Pink White

Have A Ball (HAVB)
100% Cotton • Poly/Spandex Chocolate Knit Cuffs



Chocolate Dandelion Orange Sorbet Peacock White

It's A Jungle (ITSA)
100% Cotton



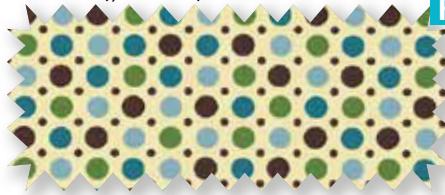
Chocolate Khaki Pink Blush White

Leopard Chic (LCHI)
100% Cotton



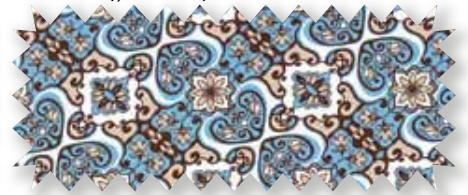
Chocolate Crème Brûlée White

Lots O' Dots (LOTO)
Brushed Poly/Cotton Poplin



Aloe Chocolate Khaki White

Medina (MDNA)
Brushed Poly/Cotton Poplin



Blue Mist Chocolate Khaki White

Sequins Of Events (SQNS)
100% Cotton



Aloe Blue Mist Canary Yellow Chocolate Khaki
Lemon Drop White

Spot On (SPON)
Brushed Poly/Cotton Poplin



Chocolate Pink Blush White

Square Essentials (SQES)
100% Cotton



Aloe Chocolate Dandelion Peacock Pink Blush
White

Vonda (VNDA)
Brushed Poly/Cotton Poplin



Chocolate Khaki Pink Blush White

Whirlwind (WRLW)
100% Cotton



Blue Mist Chocolate Dandelion White

Bold, stylish,
form-flattering
and super comfortable!
You never looked
in better shape.

2500 & 2074/2074P comes in these 6 colors with Chocolate Knit Contrast.

- No Petite ALOB - Aloe
- BMTB - Blue Mist
- No Petite CHOB - Chocolate
- No Petite KKCH - Khaki
- No Petite PEAB - Peacock*†
- No Petite PNKB - Pink Blush

*Fashion Color
†Not available in 2074



2500
MOCK WRAP TOP R
XS-3XL • *Side Panels: Poly/Spandex*
Body: Brushed Poly/Cotton Poplin with soil release
A mock wrap top features flattering and comfortable contrast knit side panels and two front patch pockets. Empire waist with front and back elastic for shaping updates this style. Center back length 26".



2074/2074P*
FOLDOVER WAIST PANT R
XS-3XL, Petite XS-2XL • *Waistband: Poly/Spandex*
Body: Brushed Poly/Cotton Poplin with soil release
A soft and stretchy contrast knit enfolds the waistband. Fold it down to any position that's comfortable and the center back waist tack will keep it in place. The straight leg has one side cargo pocket with flap. Inseam 31", Petite 28½".
*2074P Fashion Color

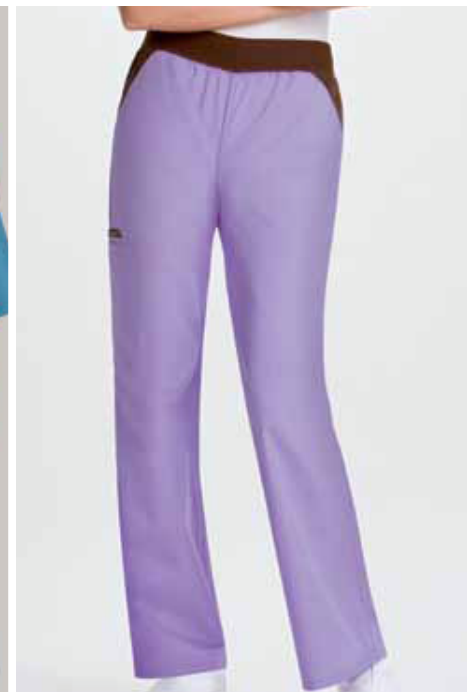
2874 and 1031/1031P comes in these 8 colors with Chocolate Knit Contrast.

- ALOB - Aloe◇
- BMTB - Blue Mist
- CHOB - Chocolate◇
- No Petite CYLB - Canary Yellow*
- KKCH - Khaki◇
- No Petite ORCB - Orchid
- No Petite PEAB - Peacock*
- PNKB - Pink Blush◇

*Fashion Color
◇2874 and 1031 sizing XS-5XL



2874
V-NECK TUNIC R
XS-3XL • *Side Panels: Poly/Spandex*
Body: Brushed Poly/Cotton Poplin with soil release
This innovative top shapes and slims the body! V-neckline, front and back yoke with soft and stretchy side panels in contrast knit. Two hidden pockets. Center back length 25".



1031/1031P
CARGO POCKET PANT R
XS-3XL, Petite XS-2XL • *Waistband: Poly/Spandex*
Body: Brushed Poly/Cotton Poplin with soil release
A moderate flare leg pant features "Comfort Fit" knit spandex waistband reinforced with elastic inside for extra support and elasticity. Also features contrast front slash pockets, cargo pocket with stitched down pen slot and contrast cell phone pocket. Inseam 31", Petite 28½".